



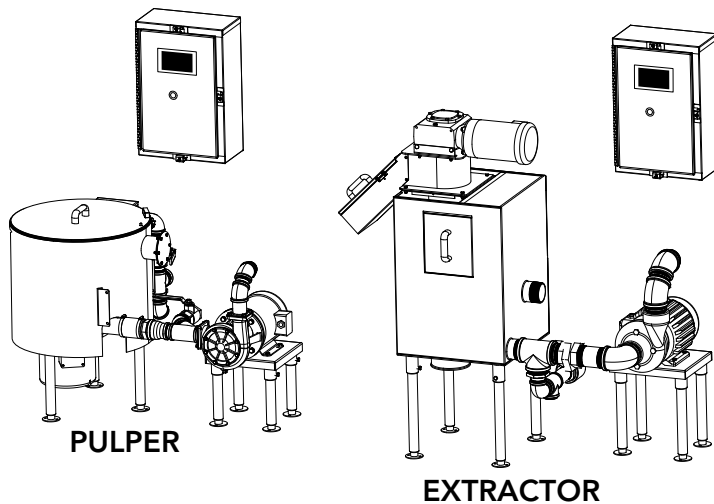
# Installation, Operation, Cleaning, and Diagnostics Manual

## Remote Waste Handling System

Models

P-5 Pulper and Extractor

P-7 Pulper and Extractor



[www.championindustries.com](http://www.championindustries.com)

Issue Date: 1.17.23

**Manual P/N 117634 rev. -**

For machines beginning with S/N J20044400 and above

3765 Champion Boulevard  
Winston-Salem, NC 27105  
(336) 661-1556 Fax: (336) 661-1660  
Toll-free: 1 (800) 858-4477

2674 N. Service Road, Jordan Station  
Ontario, Canada L0R 1S0  
(905) 562-4195 Fax: (905) 562-4618  
Toll-free: 1 (800) 263-5798

Printed in the USA



## National Service Department

### In Canada:

Toll-free: (800) 263-5798

Tel: (905) 562-4195

Fax: (905) 562-4618

email: [service@moyerdiebellimited.com](mailto:service@moyerdiebellimited.com)

### In the USA:

Toll-free: (800) 858-4477

Tel: (336) 661-1556

Fax: (336) 661-1660

email: [service@championindustries.com](mailto:service@championindustries.com)

## ATTENTION

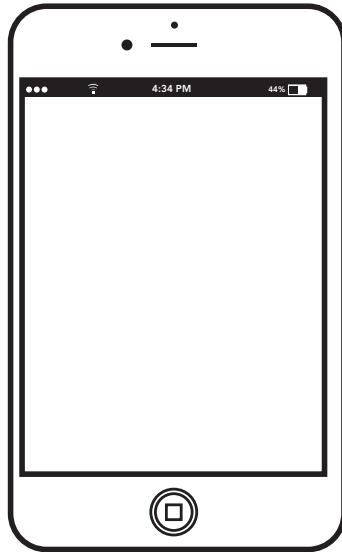
The model no., serial no., voltage, Hz and phase are needed to identify your machine and to answer questions.

**The machine data plate**  
**is located on the front**  
**of the control cabinet.**

Please have this information ready if you call for service assistance.



# Two ways to REGISTER YOUR PRODUCT and ACTIVATE YOUR WARRANTY.



- Use your mobile phone or computer to go to our website at [www.bilineconveyors.com/registration](http://www.bilineconveyors.com/registration) to register your product.

or

- Use the fax form on the next page.

# PRODUCT REGISTRATION BY FAX

COMPLETE THIS FORM AND FAX TO:

(336) 661-1660 in the USA

1-(800) 204-0109 in Canada

## PRODUCT REGISTRATION CARD

Model	Serial #
-------	----------

Date of Installation: \_\_\_/\_\_\_/\_\_\_

Company Name: \_\_\_\_\_

Address: \_\_\_\_\_  
(Street) State/Province Zip/Postal Code

Telephone #: ( ) \_\_\_\_\_ --- \_\_\_\_\_

Contact: \_\_\_\_\_

Installation Company: \_\_\_\_\_

Address: \_\_\_\_\_

Telephone #: \_\_\_\_\_

Contact: \_\_\_\_\_

**FAILURE TO REGISTER YOUR PRODUCT MAY VOID YOUR WARRANTY**

**IMPORTANT IMPORTANT**

# Revision History

Specifications are subject to change based on continual product improvement. Machine owners may request a manual by calling 1(800) 858-4477 in the USA and 1(800) 263-5798 in Canada.

Revision Date	Revised Pages	Serial Number Effectivity	Description
6.15.20	All	J20044400	Released First Edition
6.25.20	All	J20044400	Removed red color from tank fill levels

## Limited Warranty

# LIMITED WARRANTY

Biline Conveyors (herein referred to as "The Company"), 3765 Biline Blvd., Winston-Salem, North Carolina 27105, and 2674 N. Service Road, Jordan Station, Ontario, Canada, L0R 1S0, warrants machines, and parts, as set out below.

**Warranty of Machines:** The Company warrants all new machines of its manufacture bearing the name "Biline" and installed within the United States and Canada to be free from defects in material and workmanship for a period of one (1) year after the date of installation or fifteen (15) months after the date of shipment by The Company, whichever occurs first. [See below for special provisions relating to glasswashers.] Warranty registration must be submitted to The Company within ten (10) days after installation either online at Biline Industries website (<http://www.Bilineconveyors.com/registration>) or by the fax form at the front of this manual. The Company will not assume any responsibility for extra costs for installation in any area where there are jurisdictional problems with local trades or unions.

If a defect in workmanship or material is found to exist within the warranty period, The Company, at its election, will either repair or replace the defective part or accept return of the machine for full credit; provided; however, as to glasswashers, The Company's obligation with respect to labor associated with any repairs shall end (a) 120 days after shipment, or (b) 90 days after installation, whichever occurs first. In the event that The Company elects to repair, the labor and work to be performed in connection with the warranty shall be done during regular working hours by a Biline authorized service technician. Defective parts become the property of The Company. Use of replacement parts not authorized by The Company will relieve The Company of all further liability in connection with its warranty. In no event will The Company's warranty obligation exceed The Company's charge for the machine. The following are not covered by The Company's warranty:

- a. Lighting of gas pilots or burners.
- b. Cleaning of gas lines.
- c. Replacement of fuses or resetting of overload breakers.
- d. Adjustment of thermostats.
- e. Adjustment of clutches.
- f. Opening or closing of utility supply valves or switching of electrical supply current.
- g. Cleaning of valves, strainers, screens, nozzles, or spray pipes.
- h. Performance of regular maintenance and cleaning as outlined in the operator's guide.
- i. Damages resulting from water conditions, accidents, alterations, improper use, abuse, tampering, improper installation, or failure to follow maintenance and operation procedures.
- j. Wear on Pulper cutter blocks, pulse vanes, and auger brush.

Examples of the defects not covered by warranty include, but are not limited to: (1) Damage to the exterior or interior finish as a result of the above, (2) Use with utility service other than that designated on the rating plate, (3) Improper connection to utility service, (4) Inadequate or excessive water pressure, (5) Corrosion from chemicals dispensed in excess of recommended concentrations, (6) Failure of electrical components due to connection of chemical dispensing equipment installed by others, (7) Leaks or damage resulting from such leaks caused by the installer, including those at machine table connections or by connection of chemical dispensing equipment installed by others, (8) Failure to comply with local building codes, (9) Damage caused by labor dispute.

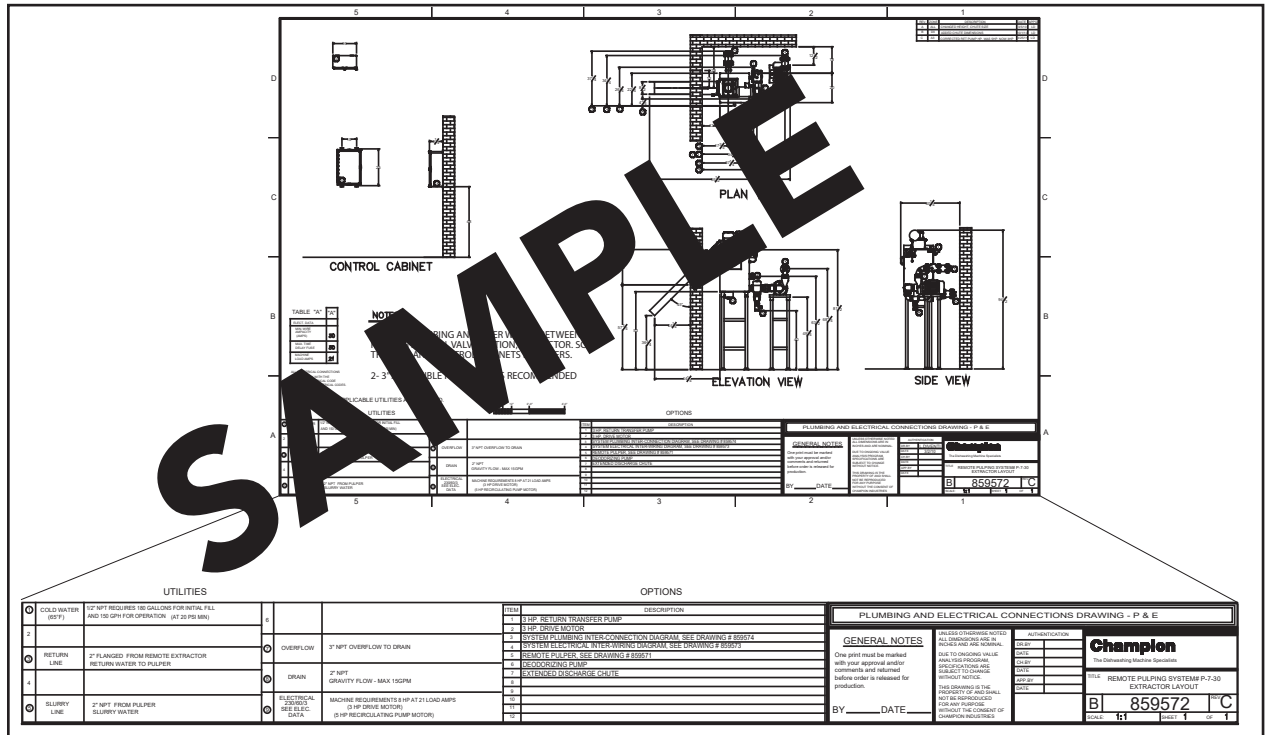
**Warranty of Parts:** The Company warrants all new machine parts produced or authorized by The Company to be free from defects in material and workmanship for a period of 90 days from date of invoice. If any defect in material and workmanship is found to exist within the warranty period The Company will replace the defective part without charge.

**DISCLAIMER OF WARRANTIES AND LIMITATIONS OF LIABILITY. THE COMPANY'S WARRANTY IS ONLY TO THE EXTENT REFLECTED ABOVE. THE COMPANY MAKES NO OTHER WARRANTIES, EXPRESS OR IMPLIED, INCLUDING, BUT NOT LIMITED, TO ANY WARRANTY OF MERCHANTABILITY, OR FITNESS OF PURPOSE. THE COMPANY SHALL NOT BE LIABLE FOR INCIDENTAL OR CONSEQUENTIAL DAMAGES. THE REMEDIES SET OUT ABOVE ARE THE EXCLUSIVE REMEDIES FOR ANY DEFECTS FOUND TO EXIST IN THE COMPANY'S MACHINES AND THE COMPANY'S PARTS, AND ALL OTHER REMEDIES ARE EXCLUDED, INCLUDING ANY LIABILITY FOR INCIDENTALS OR CONSEQUENTIAL DAMAGES.**

The Company does not authorize any other person, including persons who deal in Biline machines to change this warranty or create any other obligation in connection with Biline machines.

# PLUMBING AND ELECTRICAL DRAWING, (P&E)

- The P&E contains important assembly and utility information for the installation of the machine.
- Contact the factory before installing the machine if you do not have this document at the installation site.



**STOP:**  
INTER-PLUMBING AND INTER-WIRING BETWEEN PULPER, VALVES, EXTRACTOR, SCRAP TROUGH, AND CONTROL CABINETS BY OTHERS.

A 3" ACCESSIBLE FLOOR SINK IS RECOMMENDED.

## INSTALLATION CODES

The installation of the machine must comply with all local electrical, plumbing, health and safety codes or in the absence of local codes, installed in accordance with the applicable requirements in the National Electrical Code, NFPA 70, Canadian Electrical Code (CEC) Part 1, CSA C22.1; and the Standard for Ventilation Control and Fire Protection of Commercial Cooking Operations, NFPA 96.



**NOTE:**  
Only qualified personnel familiar with the installation of food service equipment should attempt the installation of this machine. Damage or problems associated with improper installation will not be covered by the machine limited warranty.

## PULPER SPECIFICATIONS

### P5-24

24" diameter waste grinding chamber with 5 HP grinder motor

4 stationary cutter blocks and 2 tool-steel cutting blades.

Flatware saver

Remote mounted control cabinet

Remote water press/extractor with 2 HP motor

(700 lb/hr. input capacity)

### P5-27 and P5-30

27" or 30" diameter waste grinding chamber with 5 HP grinder motor respectively

4 stationary cutter blocks and 2 tool-steel cutting blades.

Flatware saver

Remote mounted control cabinet

Remote water press/extractor with 2 HP motor

(700 lb/hr. input capacity)

### P7-30

30" diameter waste grinding chamber with 7.5 HP grinder motor

4 stationary cutter blocks and 2 tool-steel cutting blades.

Flatware saver

Remote mounted control cabinet

Remote water press/extractor with 3 HP motor

(1000 lb/hr. input capacity)

# TABLE OF CONTENTS

Revision History .....	i
Limited Warranty .....	ii
Plumbing and Electrical Drawing, (P&E) .....	iii
Installation Codes .....	iii
Pulper Specifications .....	iv
<b>INSTALLATION .....</b>	<b>1</b>
UNPACKING .....	1
INSPECT THE INSTALLATION SITE .....	1
PLACING THE MACHINE .....	1
PLUMBING CONNECTIONS .....	2
DRAIN CONNECTION.....	3
ELECTRICAL CONNECTION .....	4
OPTIONAL ETHERNET CONNECTION .....	6
REMOTE PULPER QUICK FACTS .....	7
WASTE HANDLING PRECAUTIONS .....	8
PULPER AND EXTRACTOR CONTROL BOXES .....	9
<b>WASTE SYSTEM OPERATION .....</b>	<b>10</b>
INITIAL START-UP .....	10
MACHINE NOT FULL - PRESS START .....	10
FILL IN PROGRESS.....	11
PRESS START TO RUN.....	12
MACHINE RUNNING.....	12
CLEAN CYCLE IN PROGRESS .....	13
MANUALLY DRAINING THE MACHINE .....	14
CLEANING - END OF THE DAY .....	14
WASTE HANDLING PRECAUTIONS .....	11
PULPER AND EXTRACTOR CONTROL BOXES .....	16
FAULT ALARMS .....	18
System Overdue for Clean Cycle .....	19
Pulper Faults .....	19
Extractor Faults .....	25
<b>DIAGNOSTICS .....</b>	<b>26</b>
Signing In .....	26
Input Menu .....	27
Output Menu.....	27
Function Test Menu.....	28
Clean Cycle Settings .....	28
Deodorizer Settings .....	29
Extractor Flush Set Points .....	30
Data Test Menu .....	30
Amp Reader .....	31
Pulper PID .....	31

## TABLE OF CONTENTS (continued)

<b>MAINTENANCE .....</b>	<b>32</b>
Maintenance Schedules .....	32
Lubrication Schedule .....	32
Troubleshooting Chart .....	32

## UNPACKING

- Upon receipt, inspect the machine and its shipping containers for damage.
- Immediately contact the carrier and save all packing material for inspection if damaged.
- Accessories and hardware kits are shipped inside the machine. Do not discard anything stored with or inside the machine.
- Do not remove any labels attached to the machine until assembly is complete.



### NOTE:

Immediately register the machine warranty by scanning the QR code located on the machine control cabinet, or by fax using the fax form at the front of this manual, or using the Champion Industries website at <https://championindustries.com/warranty-registration>.

## INSPECT THE INSTALLATION SITE

- Make sure the machine will pass through all doors, passageways and ceilings.
- Check the level and condition of the floors before placing the machine.
- Compare the size and location of the utilities, (water, electric, drain, ventilation etc.), and make sure they agree with the P&E and the machine.
- Test the electrical service(s) to ensure they correspond to the machine requirements.

## PLACING THE MACHINE



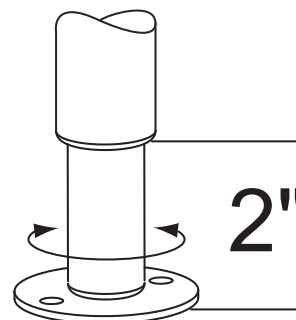
### CAUTION:

Inspect the bottom of the machine and note the location of piping before removing the machine from their pallets. Never lift the units by their piping or electrical conduits.

- Place the machine near their final locations before final assembly.
- The floor may not be level so final leveling will depend on variations in the floor.
- The legs are equipped with adjustable feet for leveling.
- Level the units front-to-back and side-to-side with a bubble level.
- The feed trough is attached to the pulper by others.

### NOTE:

DO NOT REMOVE THE INSTALLATION TAGS ATTACHED TO THE MACHINE UNTIL ALL UTILITIES ARE CONNECTED.



## PLUMBING CONNECTIONS



**COLD  
WATER**



**CAUTION:** The installing plumber must flush debris from the water supply line before connecting it to the machine.

- EXTRACTOR FLUSHING LINE: Connect a 1/2" NPT hot water line to (A).
- EXTRACTOR FILL LINE: Connect a 3/4" NPT cold water line to (B).
- PULPER FILL LINE: Connect a 3/4" NPT cold water line to the pulper (C)



**STOP:**

Make sure the pulper seal flushing line is not disconnected or damaged.

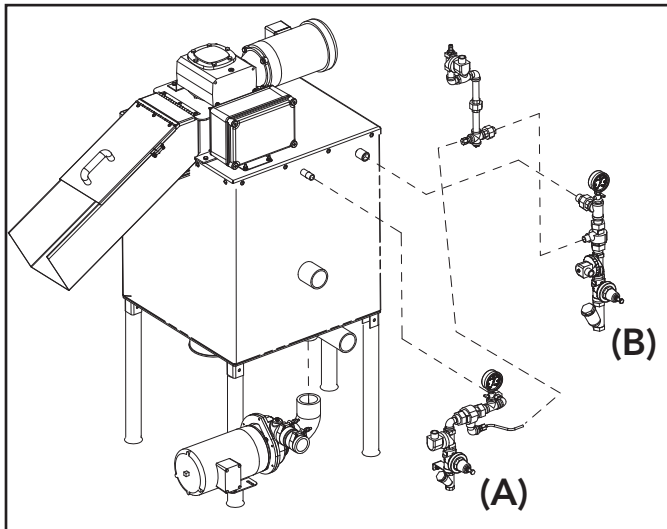


Fig. 1 -  
Extractor cold water connections.

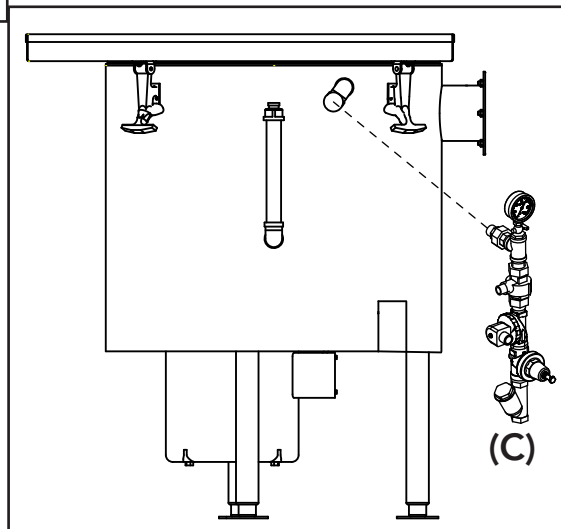


Fig. 2 -  
Pulper cold water connection.

## DRAIN CONNECTION



- EXTRACTOR DRAIN LINE: Connect a 1-1/2" NPT line to (A).
- EXTRACTOR OVERFLOW DRAIN: Connect a 3" NPT line to (B).
- PULPER OVERFLOW DRAIN: Connect a 2" NPT line to (C).
- PULPER DRAIN LINE: Connect a 2" NPT line to (D).

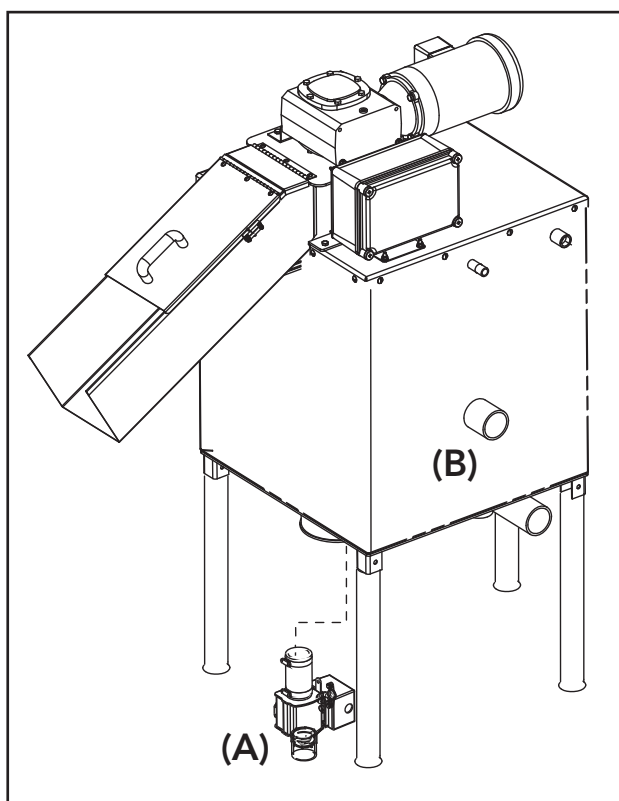


Fig. 3 -  
Extractor drain connections.

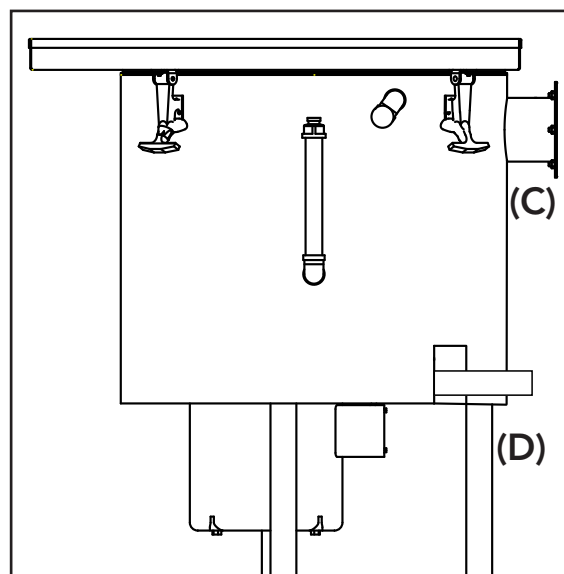


Fig. 4 -  
Pulper drain connections.

# ELECTRICAL CONNECTION



**WARNING:**

Electrocution may occur when working on energized circuits. Disconnect power at the main breaker or service disconnect switch, then lock out and tag the circuit to indicate that work is being performed.

- Refer to the Plumbing and Electrical, P&E, for the specific power requirements.
- The controls are comprised of a Main Control Cabinet, Slave Control Cabinet, and a remote start/stop station (Fig. 5).
- Install the Main Control Cabinet and Start/Stop station at the extractor.
- Install the Slave Control Cabinet at the extractor.
- Inter-wiring is performed by others.

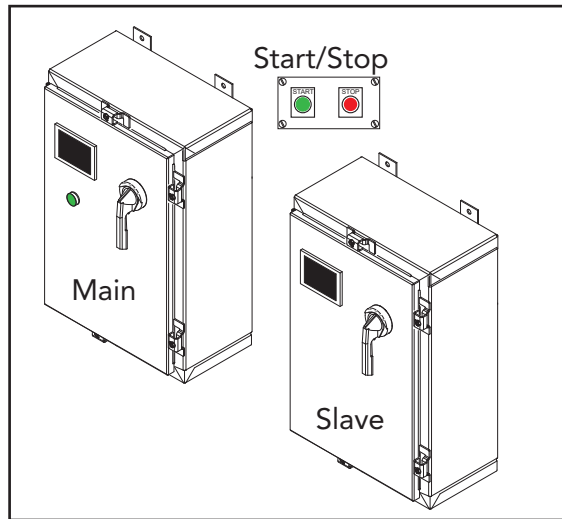


Fig. 5 - Control cabinets and start/stop station.

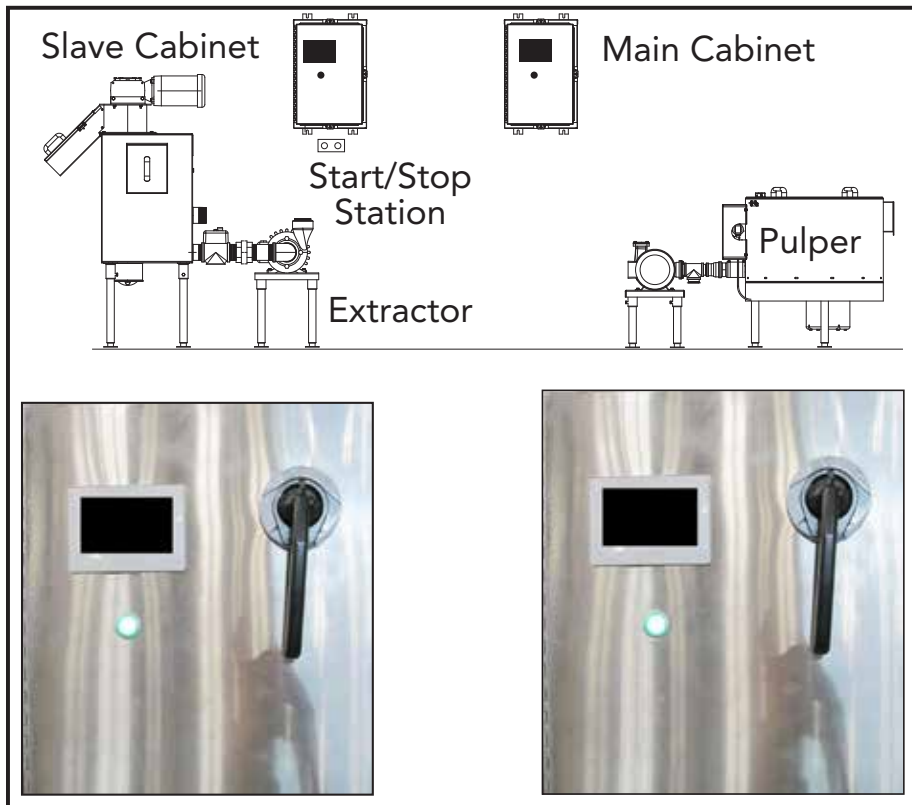


Fig. 6 - Typical control layout.

## ELECTRICAL CONNECTION



### CAUTION:

Power conduit should be installed at the top-right or right-side of the main and slave control cabinets.

Power wires are connected to the top of the circuit breaker.



Fig. 7 -  
Main control cabinet power connection.

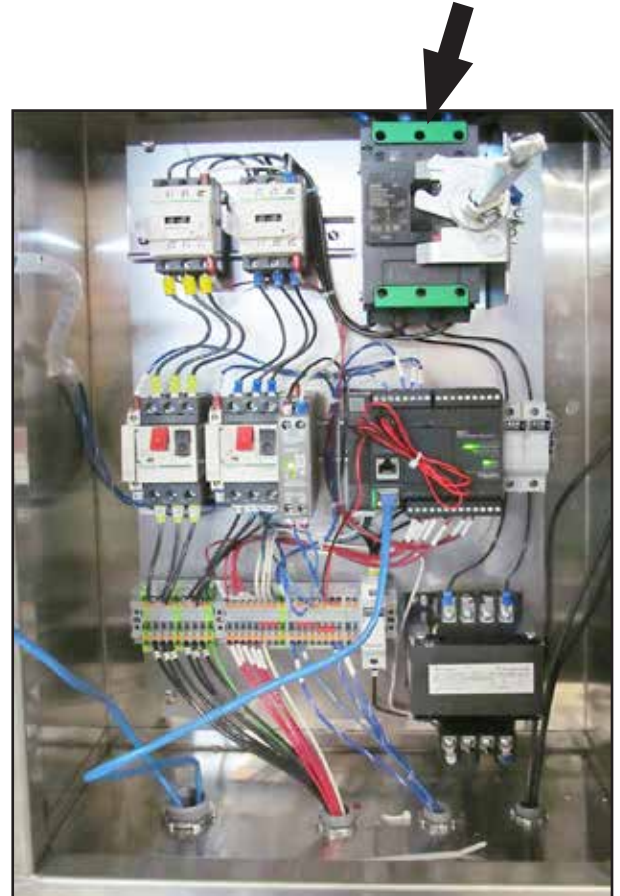


Fig. 8 -  
Slave control cabinet power connection.

## CHECK MOTOR ROTATION

**All motors are phased the same at the factory.**

Reverse L1 and L2 at the circuit breaker in the control cabinet to change motor direction of all motors.

## OPTIONAL ETHERNET CONNECTION

- Optional internet connectivity for factory maintenance and troubleshooting is available using a 2.4 GHZ Wi-Fi antenna (a), or a CAT5 ethernet connection.
- The connections are located at the top of main control cabinet as shown if Fig. 7.
- Internal wiring is performed at the factory
- The external cable and connecting hardware are supplied by others.



**NOTE:**

The Ethernet CAT-5 communication cable from control cabinet to the building is supplied by others.

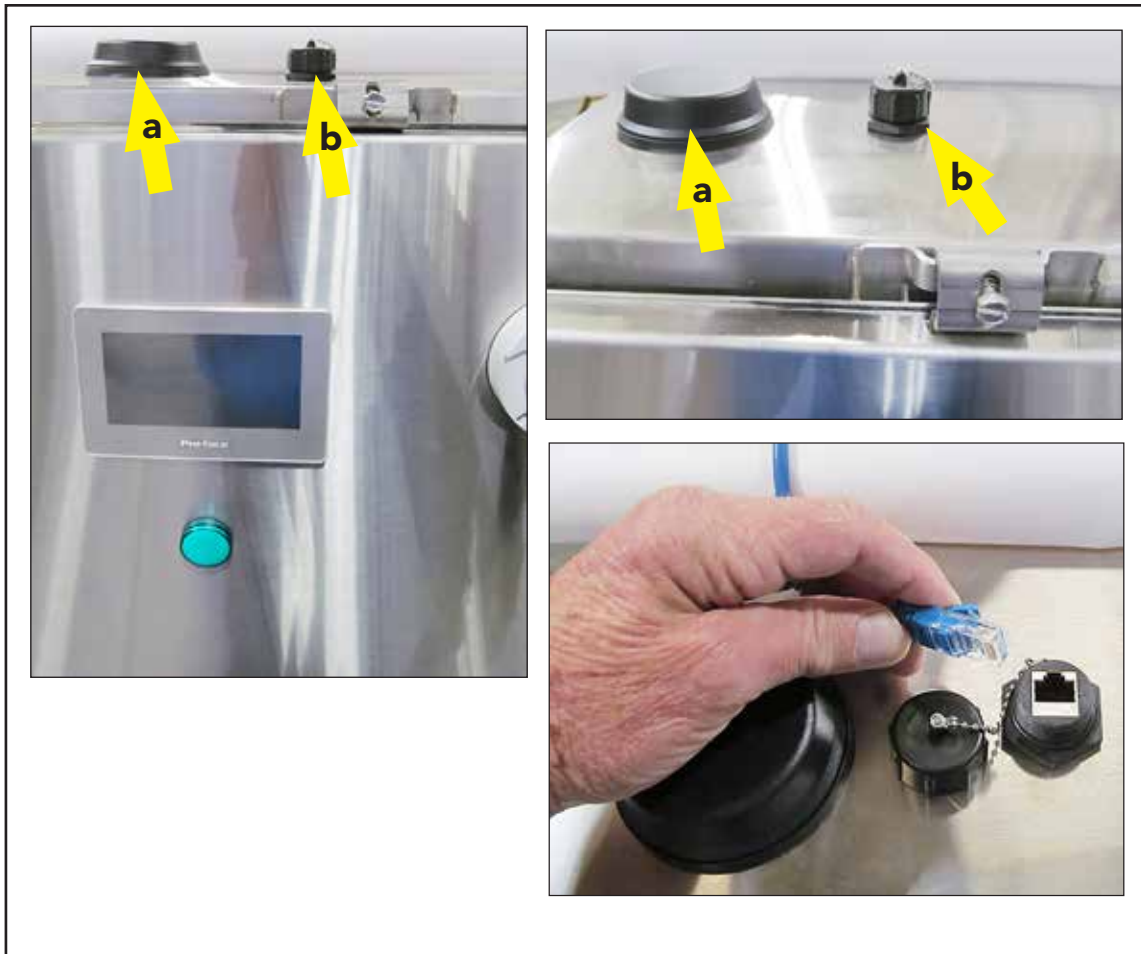
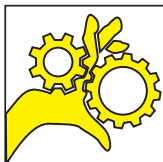


Fig. 9 -  
Optional Wi-Fi or Ethernet connections.

## REMOTE PULPER QUICK FACTS

- **What can I process through my remote pulper system?**

The pulper is capable of processing food, paper products, and some plastics. Plastics such as saran wrap cannot be processed as easily as harder plastics because of the elasticity. It has the tendency to stretch rather than being cut. Also, because styrofoam is so light, it has the tendency to float on top of the water level and will not be pulled to the bottom of the vortex to be cut. At the end of the day, after the slurry tank has been drained, you may find pieces of saran wrap and styrofoam left in the bottom of the slurry tank to be removed manually.



### **WARNING:**

The machine contains high speed cutters that can cause serious injury or death. Never place hands inside machine when running. Never bypass a safety device.

- **How do I operate my remote pulper system?**

The pulpers system is easy and simple to operate. Be sure the building main breaker is on and the power is on at the pulper and extractor cabinet disconnect switch. Make sure all covers and safety chutes are in place and the safety switches are closed. Place a waste container under the extractor discharge chute to catch discharged pulp.

- Turn power on. The touch screen display on the extractor and pulper will illuminate and the program will load. The system will automatically reach a system balance. Press the green start button on the start/stop station to begin operation.



### **CAUTION:**

Do not place metal, such as silverware or box staples into the pulper tank. Metal objects will damage the cutter blades and blocks and reduce the performance of the pulper.

- **How do I clean my remote pulper system?**

The pulper system is equipped with an automatic cleaning cycle activated by pressing the "CLEAN" button on the extractor control panel. It is highly recommended that cardboard, (MAKE SURE THE CARDBOARD IS FREE OF METAL STAPLES), be fed into the pulper during the clean cycle to help remove food soils.

- Make sure all breakers are off, then remove floating debris from the pulper tank. Remove any metal from the magnet in the bottom of the pulper. Open the discharge chute and carefully remove accumulated cardboard at the top of the auger to prevent hardening of debris at the discharge cone.

## WASTE HANDLING PRECAUTIONS



### WARNING:

The machine contains high speed cutters that can cause serious injury or death. Never place hands inside machine when running. Never bypass a door safety device.



### CAUTION:

Do not place metal, such as silverware or box staples into the pulper tank. Metal objects will damage the cutter blades and blocks and reduce the performance of the pulper.

## LOADING WASTE

DO NOT PLACE THE FOLLOWING MATERIALS INTO THE PULPER

- Metal of any kind, such as, box staples, metal foil, steel wool, wire, coins, or utensils.



### NOTE:

The pulper tank is equipped with a powerful magnet capable of catching most items containing iron.



Fig. 10 - Magnet

- Styrofoam
- Plastic utensils
- Condiment packages (ketchup etc.)
- Bottle caps
- cellophane (saline crackers etc.)
- Plastic tape or banding
- Cloth, leather, rubber or wood
- Glass, rocks, dirt
- Paint, solvents



Fig. 11 -  
Do not load plastics

## PULPER AND EXTRACTOR CONTROL BOXES

- The control panel has a Touchscreen Display, and an ON-OFF Circuit Breaker.
- The touchscreen display is a Human Interface, HMI. The operator uses the screen to input instructions. Instructions and machine status are displayed on the HMI.
- The pulper and extractor cabinets are energized through the ON-OFF Breaker handles.

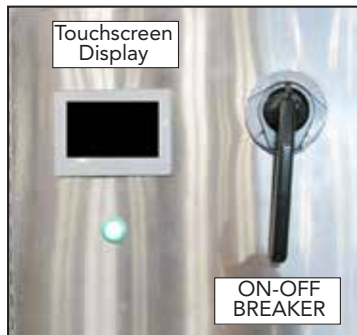


Fig. 12 -  
Control Panels

- The ON-OFF Circuit breaker is a power on/off switch and overload circuit breaker.
- There are three positions on the switch: ON, OFF, RESET/LOCK.
- The BREAKER should be locked and tagged when the control panel is serviced.



Fig. 13 -  
Circuit Breaker has On, Off, &  
Reset/Lock



Fig. 14 -  
The circuit breaker should be locked  
and tagged when the panel is serviced.

- The pulper system START/STOP station is located near the pulper control cabinet.



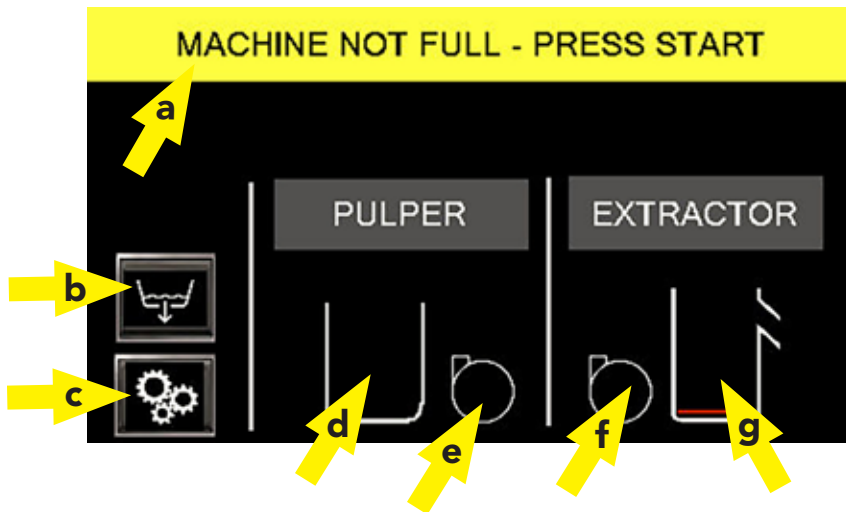
Fig. 15 -  
Pulper System Start/Stop Station

## WASTE SYSTEM OPERATION

### INITIAL START-UP

1. Turn water ON.
2. Turn main power ON.
3. Turn control panel circuit breakers ON.
  - a. The Pulper and Extractor touchscreens illuminate.
  - b. Ignore the text that appears in the bottom right corners of the screens.
4. The screen icons are:
  - a. Status bar
  - b. Tank Drain
  - c. Diagnostics Menu
  - d. Pulper tank
  - e. Pulper pump
  - f. Extractor pump
  - g. Extractor tank with discharge chute
5. The status bar reads "MACHINE NOT FULL" and prompts the user to 'PRESS START'. Press the green start button on the start/stop station to fill the machine. The station is located near the waste water trough.

### MACHINE NOT FULL - PRESS START

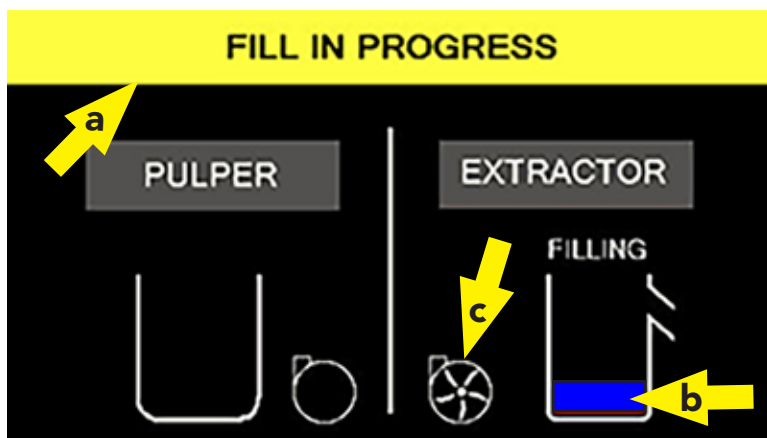


*Initial Power-up Screen*

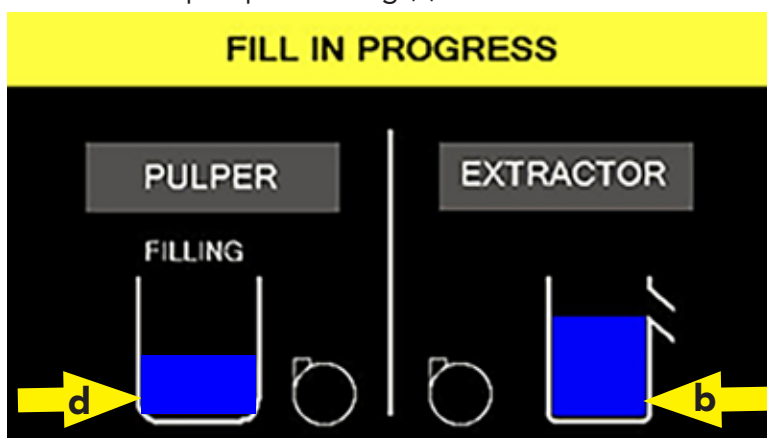


START/STOP PUSH BUTTON STATION

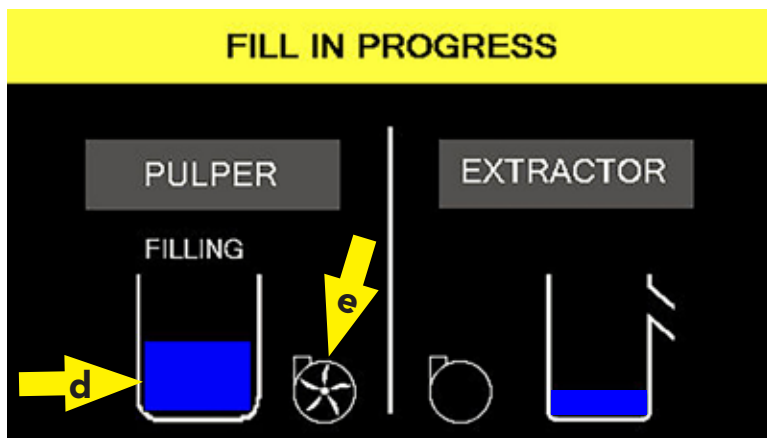
**FILL IN PROGRESS** - Begins when Start Button is pressed



- Fill in Progress appears in the Status Bar (a).
- Extractor tank (b) is filling.
- Extractor pump is running (c).



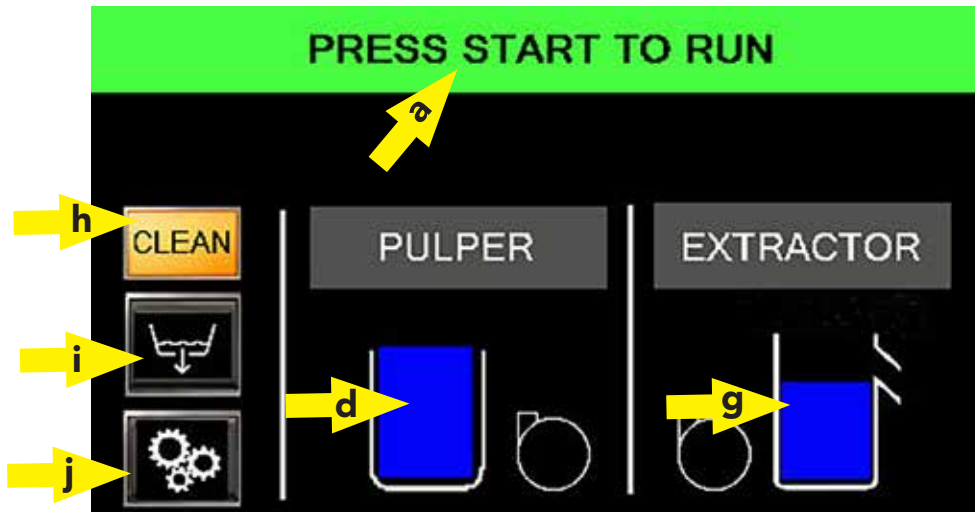
- Extractor tank water level is full (b).
- Pulper tank is filling (d).



- Pulper tank is filling (d).
- Pulper pump (e) is transferring water to extractor tank.

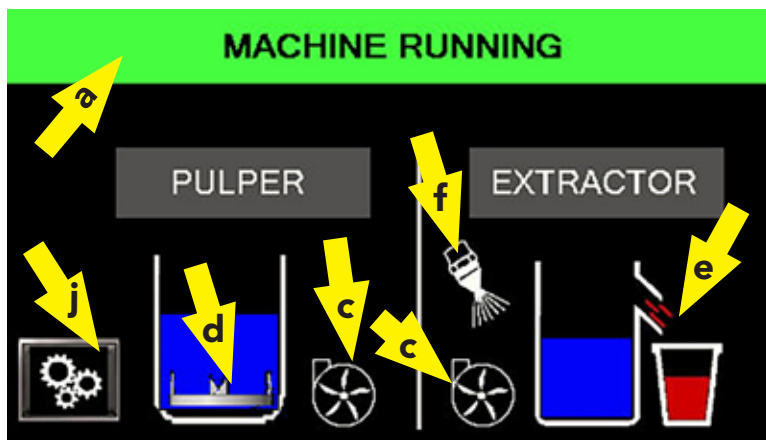
## WASTE SYSTEM OPERATION

### PRESS START TO RUN



- PRESS START TO RUN appears in the Status Bar (a), (*Press start push button*).
- Blue level in pulper tank (d) and extractor tank (g) indicates they are full of water.
- CLEAN icon (h) appears. Pressing this icon places the machine in a clean down mode.
- Drain icon (i) appears. The pulper tank drain opens if icon is pressed on the pulper screen. The extractor tank drain opens if icon is pressed on the extractor screen.
- Gear icon (j) appears. This icon accesses the diagnostics menu.

### MACHINE RUNNING



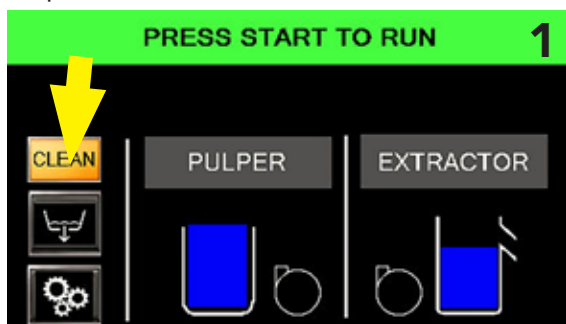
- MACHINE RUNNING (a) appears in the Status Bar indicating system is fully operational.
- Blue pulper tank shows the cutting disc (d) is running.
- Blue extractor tank shows waste discharge (e) exiting to the waste container.
- Extractor tank flushing nozzle (f) flashes on and off indicating flushing is active.
- Pulper and extractor pumps (c) are running.
- CLEAN icon is not needed and has disappeared.
- Drain icon is not needed and has disappeared.
- Gear icon (j) for the diagnostics menu is still active.

## CLEAN CYCLE IN PROGRESS

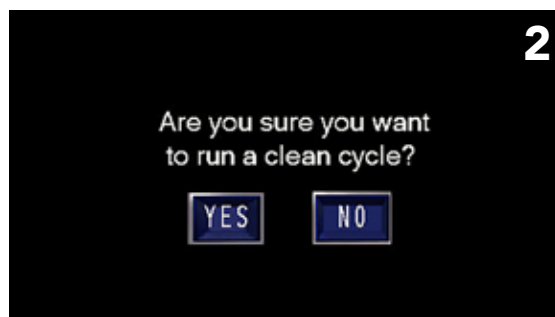


- Factory cleaning interval is 10 hours. The operator can adjust these settings.
- The system will prompt when it is time to clean. Push START to bypass the clean operation.
- A CLEAN message will repeat until the unit is cleaned.
- The machine should be cleaned at the end of day to reduce debris and odors.

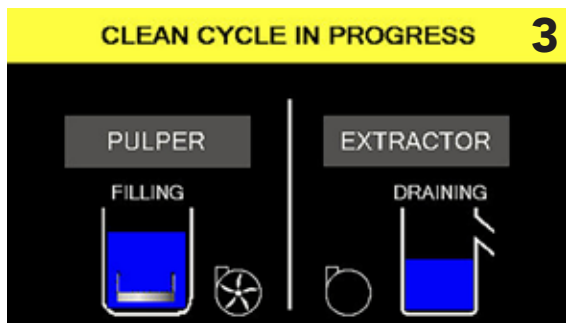
To perform the CLEAN CYCLE:



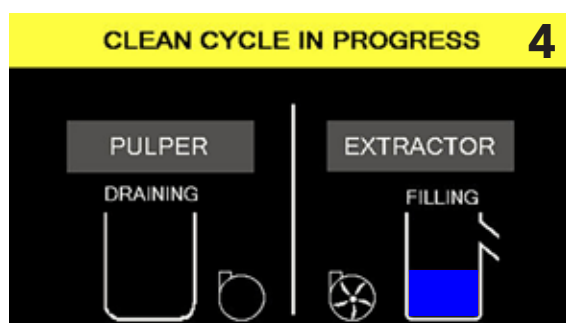
- Status bar = "PRESS START TO RUN".
- Water in pulper and extractor tanks are full.
- Press CLEAN button.



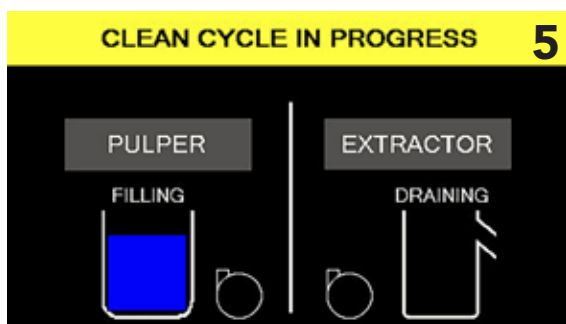
- Press YES, CLEAN CYCLE starts.
- Press NO, machine returns to normal operation.



- Status bar = "CLEAN CYCLE IN PROGRESS".
- Pulper fills, Extractor drains. Pulper pump on.



- Pulper tank drain valve opens.
- Extractor transfer pump is on.

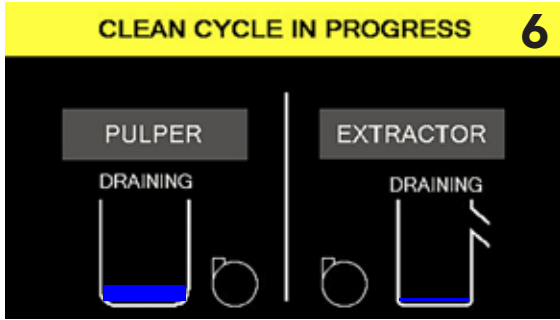


- Status bar = "CLEAN CYCLE IN PROGRESS".
- Pulper fills, Extractor drains. Pulper pump on.

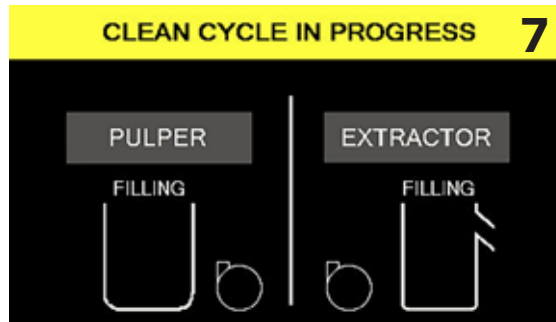
Continued on next page.

## Operation

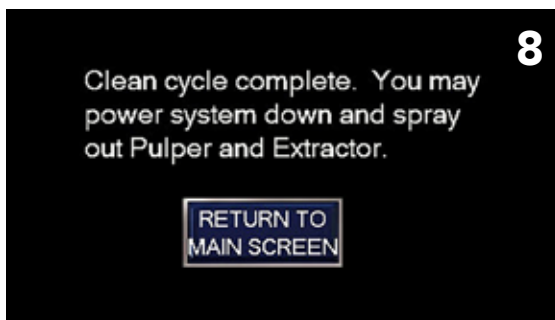
### CLEAN CYCLE IN PROGRESS (continued)



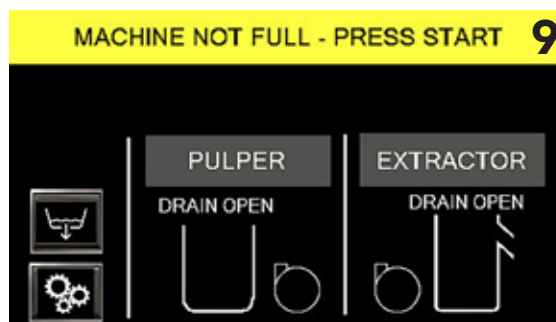
- Pulper tank drain valve opens.
- Extractor tank drain valve opens.



- Pulper fill valve on.
- Extractor fill valve on.



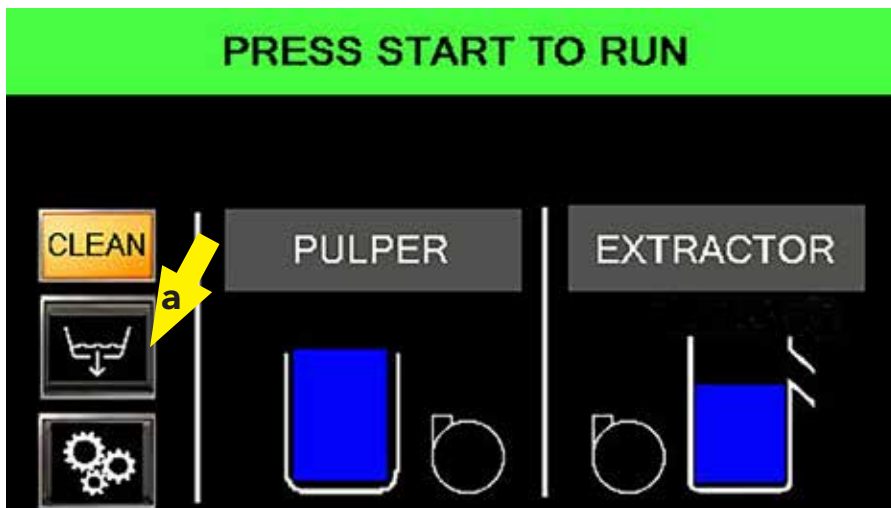
- Clean cycle complete message.
- Perform manual cleaning procedure now.



- Main Screen following clean cycle operation.

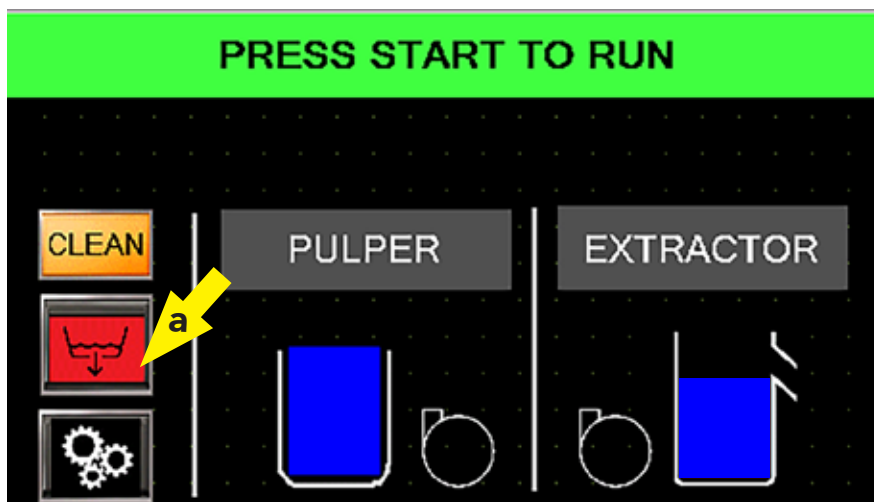
### MANUALLY DRAINING THE MACHINE

- The machine can be drained manually by pressing the drain icon, (a).
- The icon turns red when the drain valves are open.
- Press the icon again to close the drain valves. The red color disappears.
- A red alarm Status Bar if the drain valve is left open for too long. Press the icon to close the valves.

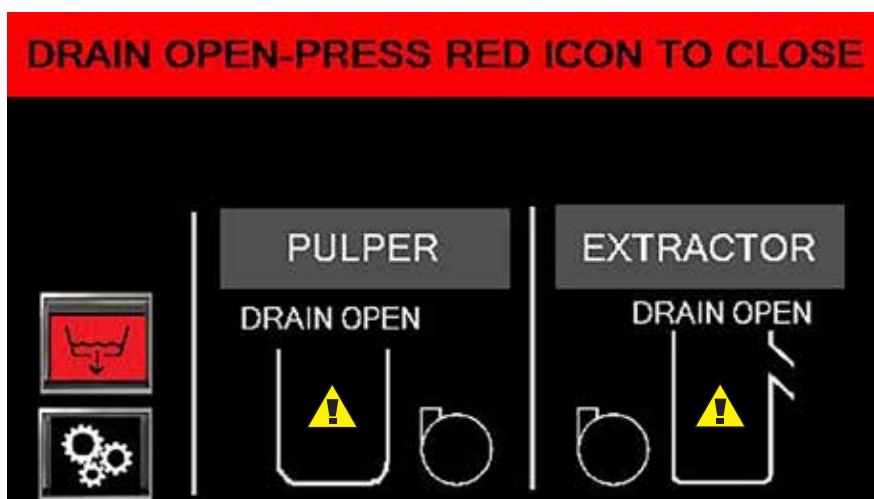


*Press the Drain valve icon to open the drain valves.*

MANUALLY DRAINING THE MACHINE (continued)



The drain valve icon turns red when pressed. Press again to close.



The Status Bar displays an alert if drain valves are left open.

## CLEANING – End of Day

- At the end of the day, cleaning is required after the automatic CLEAN CYCLE (See page 13).
- Refer to Fig. 17 on next page and the instructions below to perform a manual cleaning.



### WARNING:

Disconnect power at the main breaker or service disconnect switch, then lock out and tag the circuit to indicate that work is being performed on the system.

1. Open the extractor discharge chute and remove the side access door.
2. Be sure to remove pulp from around the extractor compression cone (Fig. 16).




### CAUTION:

Pulp left in the area of the compression cone can dry extremely hard and permanently damage the extractor cone, screen, and auger.



Fig. 16 -

Be sure to remove pulp from around extractor compression cone.

3. Flush the cone with fresh water. and wipe the discharge chute with a soft cloth.
4. Flush the extractor screen and extractor tank interior with fresh water. Use a plastic bristle brush to remove debris from the screen.
5. Remove pulper cover and remove debris from the pulper tank interior.
6. Flush the pulper tank interior with fresh water.
7. Wipe the exterior of the machine with a soft cloth and mild detergent.
8. Clean the floor around the unit to remove debris and water.
9. Replace the access door, close the discharge chute, and replace the pulper cover.
9. Restore electrical power.
10. Push the drain icon on the touchscreen display to open pulper and extractor drain valves (Refer to  on page 14).
11. Push the drain icon again to close the drains.
12. Cleaning complete.



**CAUTION:**  
Do not hose the exterior of the machine with water.

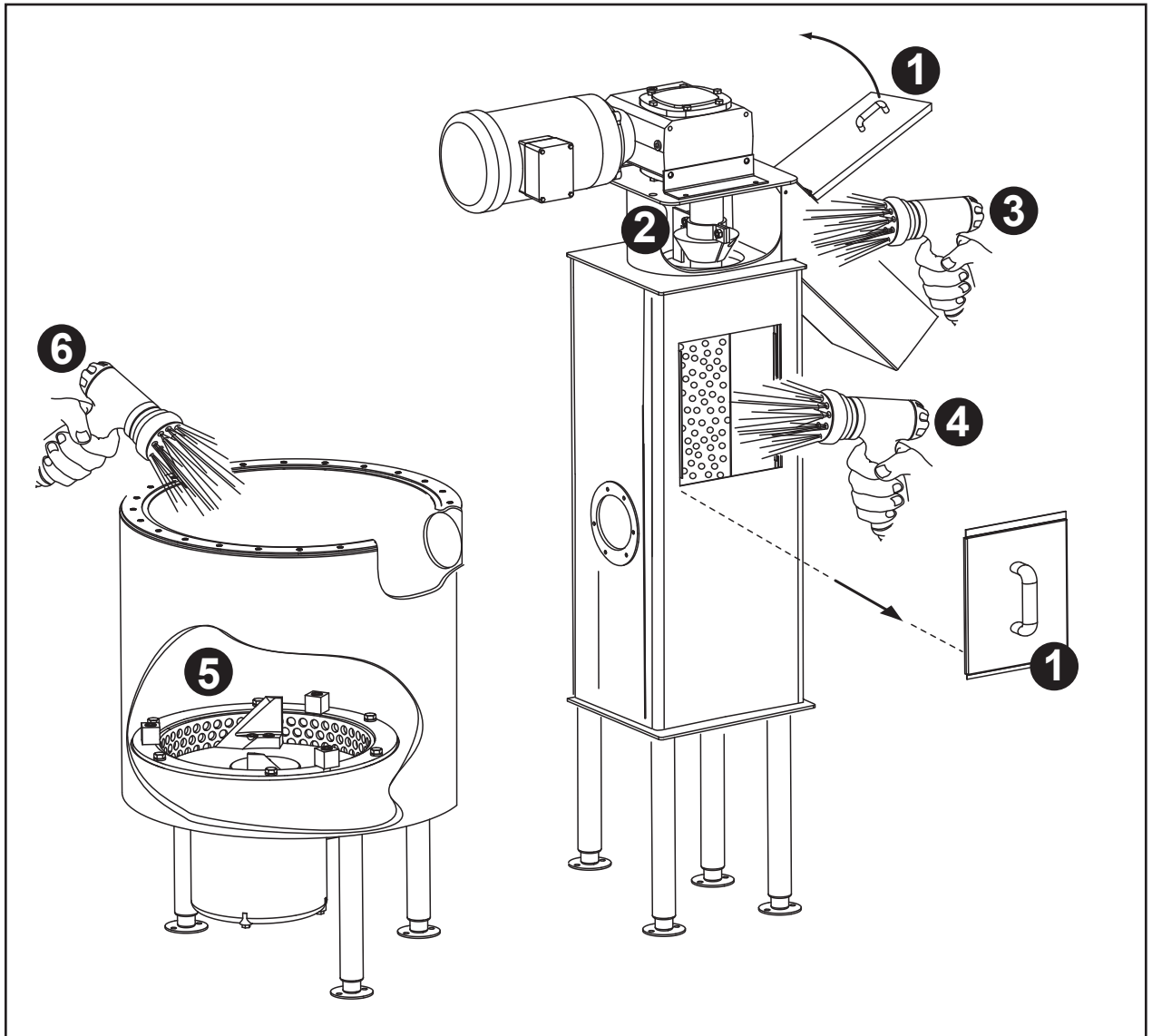
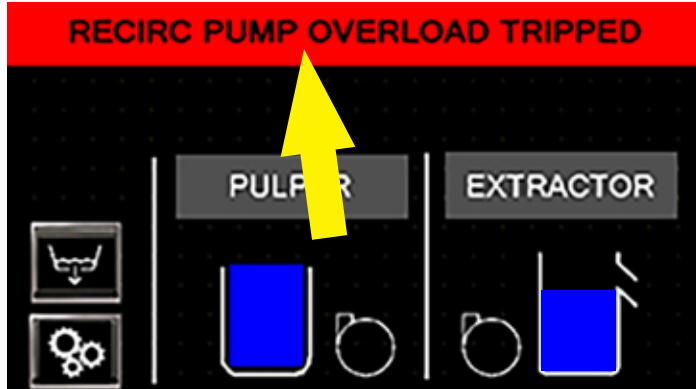


Fig. 17 -  
Pulper and Extractor Cleaning Procedure

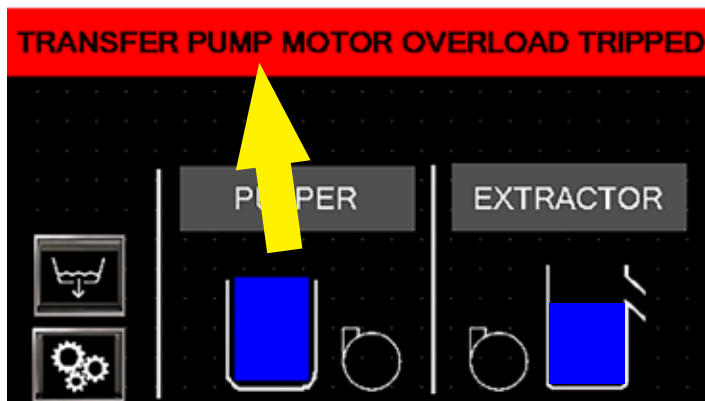
## FAULT ALARMS

- Tripped Overloads can only be fixed by a service technician. **CALL SERVICE COMPANY.**

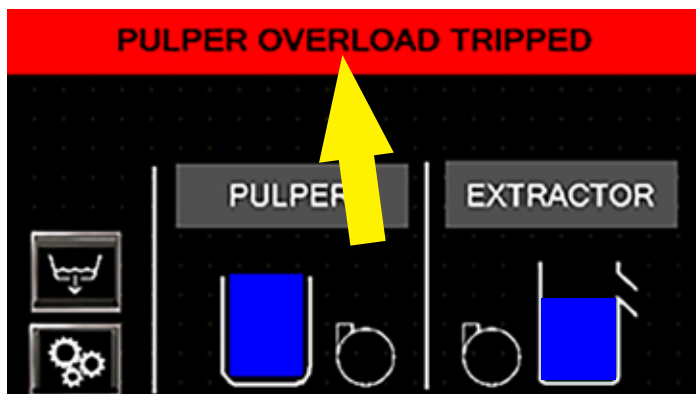
### Pump Faults



- Machine stops running.
- Call service company for repair.

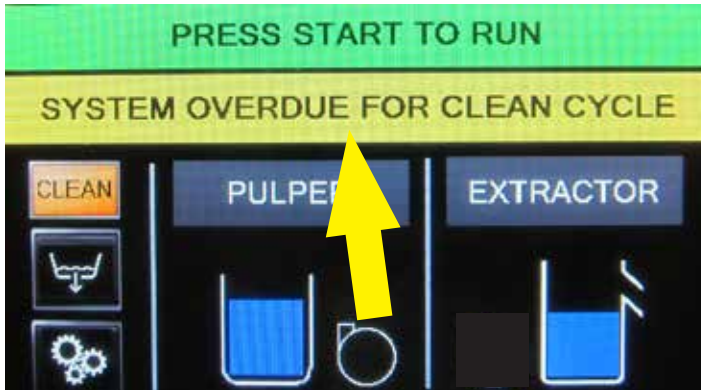


- Machine stops running.
- Call service company for repair.



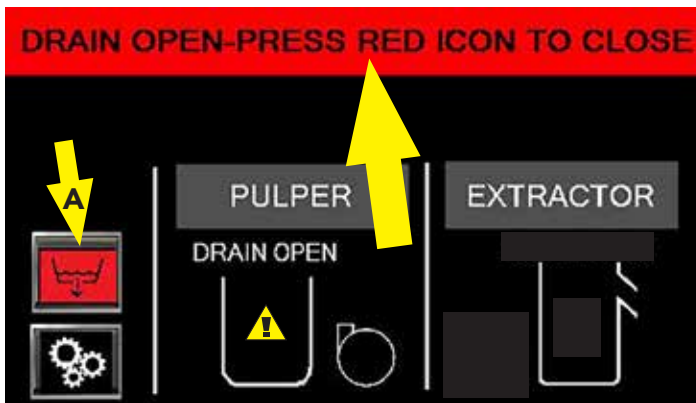
- Machine stops running.
- Call service company for repair.

- **FAULT ALARMS** an operator can troubleshoot before calling a service company to fix.

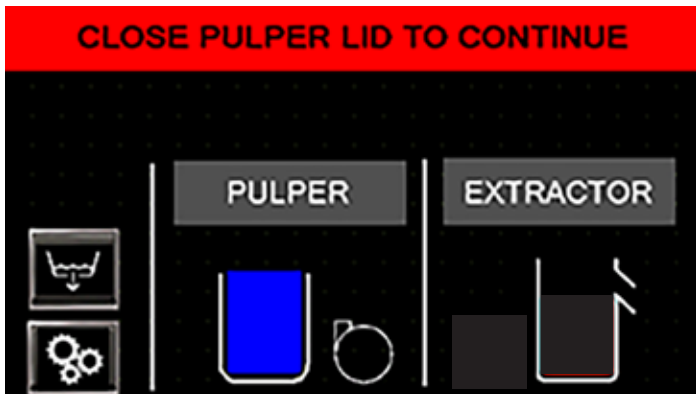


- Machine continues to run.
- User can continue to run machine.
- Alarm is displayed until Clean Cycle is performed.
- Refer to page 13 for the Clean Cycle procedure.

### Pulper Faults

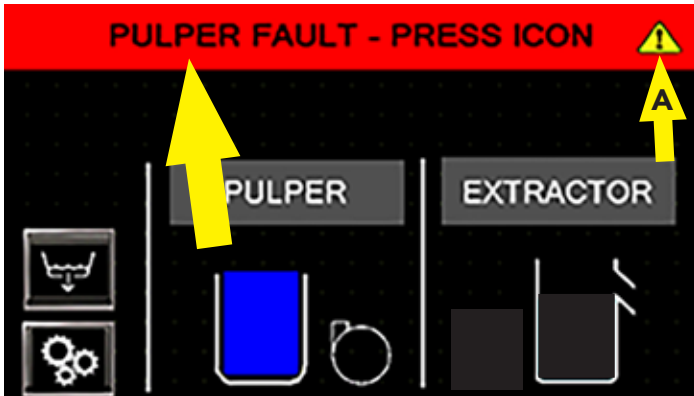


- A fault has occurred with the drain valves.
- Machine stops running.
- Press drain icon (A) to close drains.
- MACHINE NOT FULL-PRESS START screen appears.
- Press START to return to normal operation.



- Close the pulper lid which closes the pulper lid safety switch.

Pulper Faults continued



- A fault has occurred with the pulper.
- The system will stop running.
- Press icon (A).



- The troubleshooting screen will appear prompting a check of the pulper water level.
- The proper water level is indicated by the red arrow pointing to the tank baffle. The water should be even with the top of the baffle.

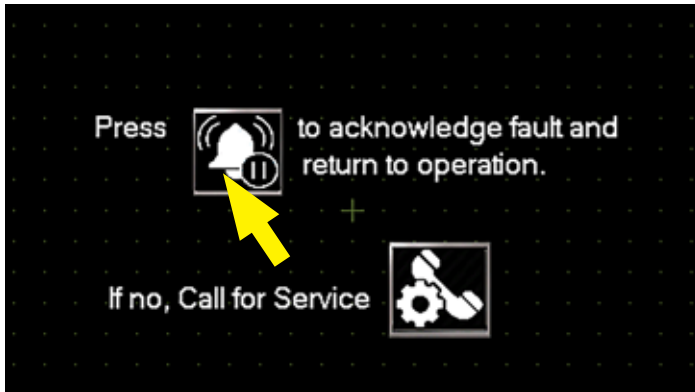


## PRESS YES

- If the water level is correct as indicated by the red arrow. Water level should reach the edge of the baffle indicated by the yellow line.

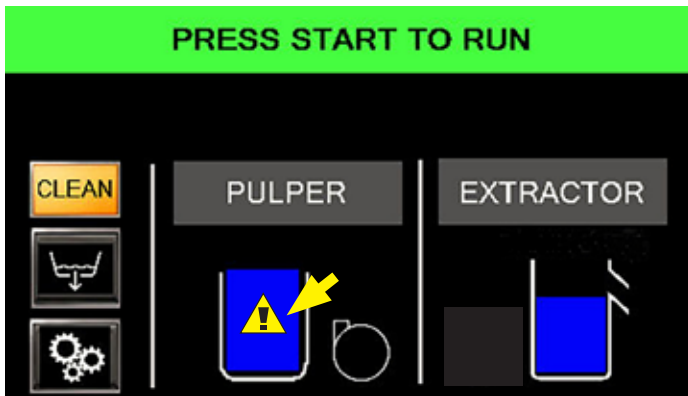
Continued on next page.

## Pulper Faults



## PRESS

- This acknowledges a fault message has occurred but allows the system to continue to operate.



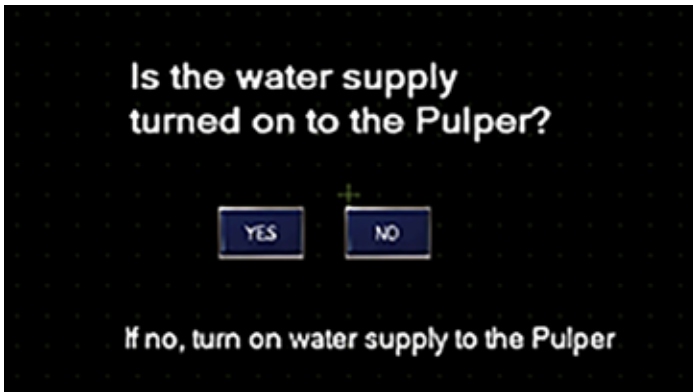
- The pulper resumes operation.
- Note the fault icon in the pulper tank indicating the machine is operating with an acknowledged fault condition.



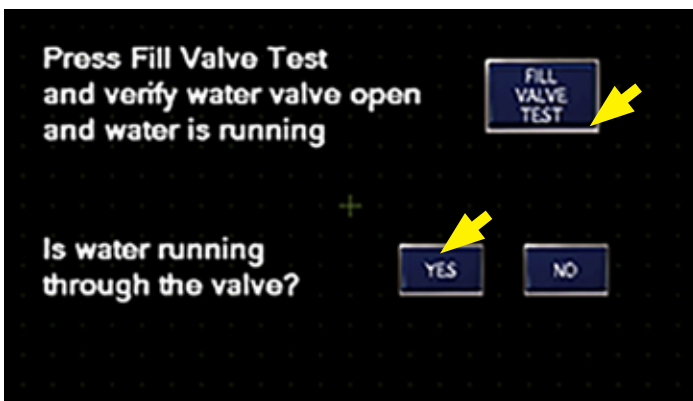
## PRESS NO


- Pressing NO enables the troubleshooting screens on the next page.

**Pulper Faults** continued

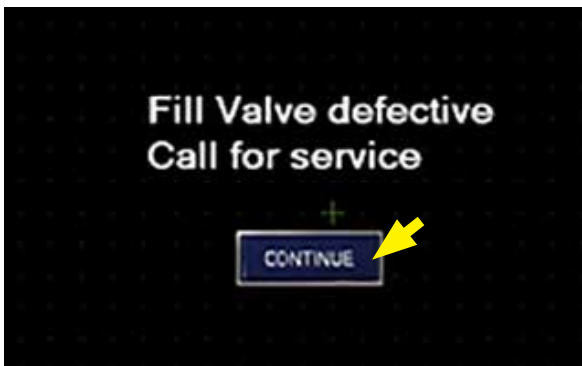


- Check the water supply to ensure water is turned on.
- Press YES if water supply is on, NO if the water supply is off.
- Turn water supply on.

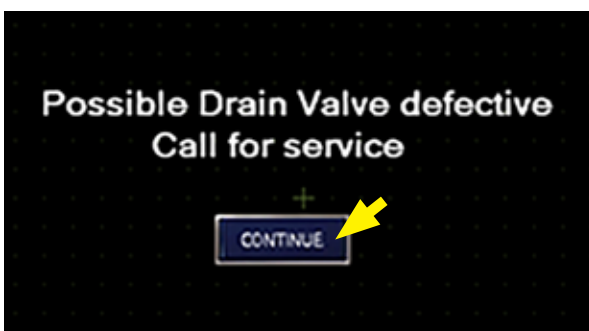


**PRESS** the **FILL VALVE TEST** button listening for a  sound indicating the valve operated.

- If the valve opens and water is running then press YES.
- If the valve does not open and water is not running then press NO.



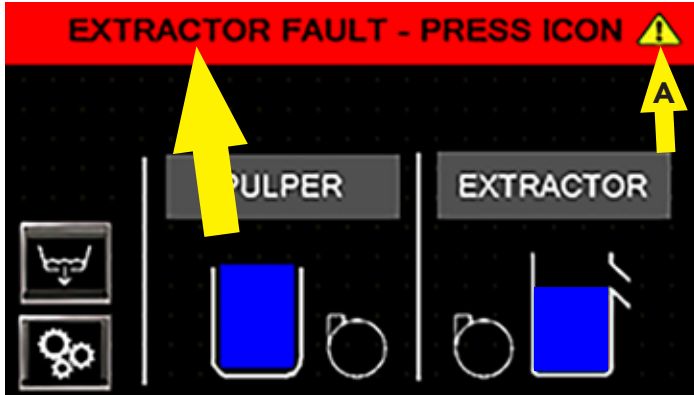
- If water is not running, then the fill valve may be defective.
- Pressing CONTINUE will access the service company contact information.



- If water is running then the drain valve may be defective or stuck open.
- Pressing CONTINUE will access the service company contact information.

Continued on next page.

### Extractor Faults

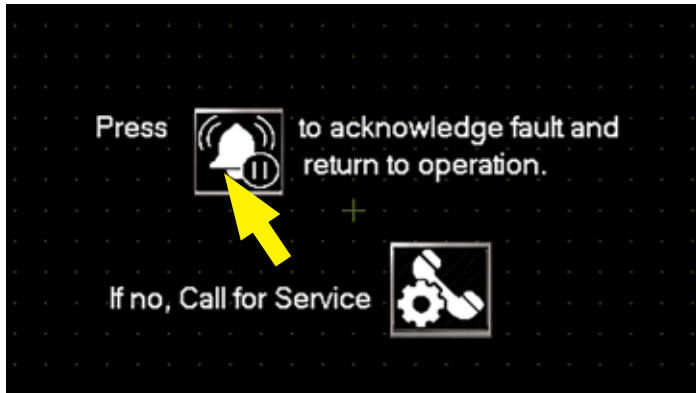


- A fault has occurred with the extractor.
- Press icon (A).
- Troubleshooting screen appears.



- Troubleshooting screen appears.

**PRESS YES**

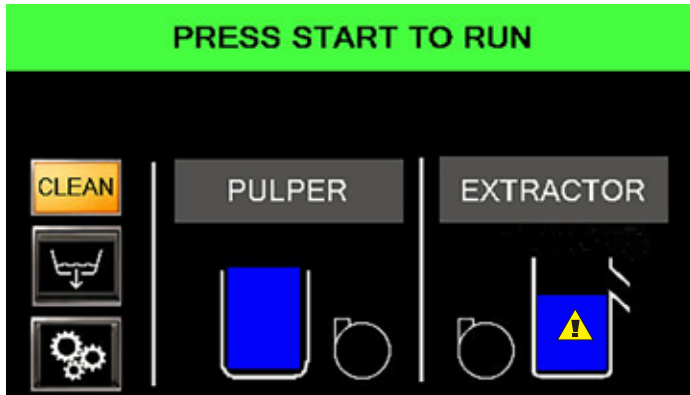


**PRESS**



- Press the Bell icon to return to normal operation.

## Extractor Faults

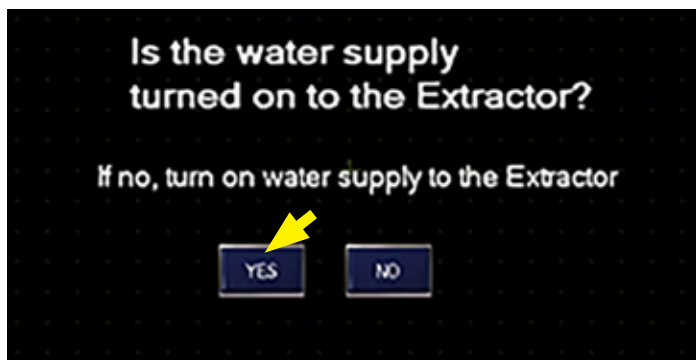


- The extractor will resume normal operation.

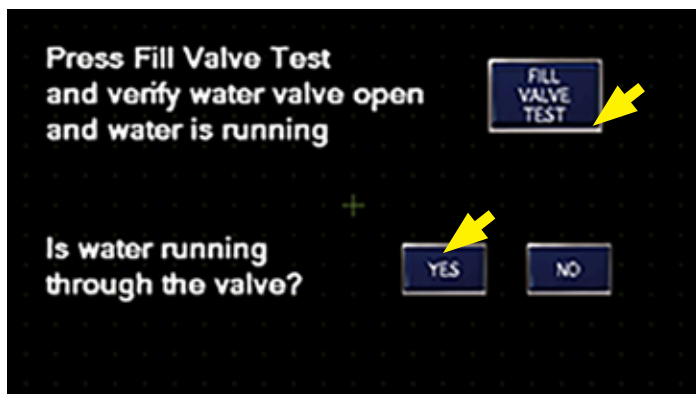



## PRESS NO

- Troubleshooting screen appears.



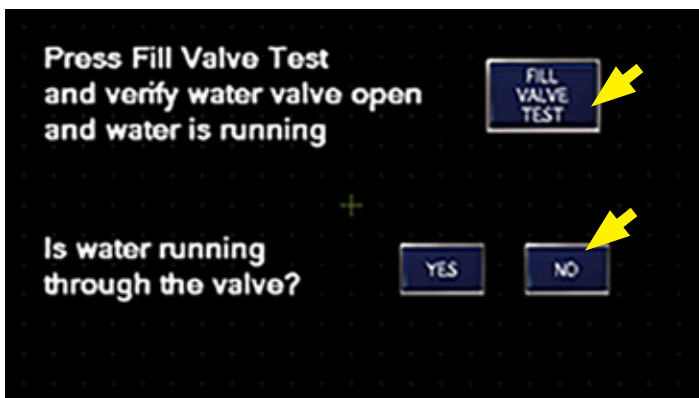
## PRESS YES



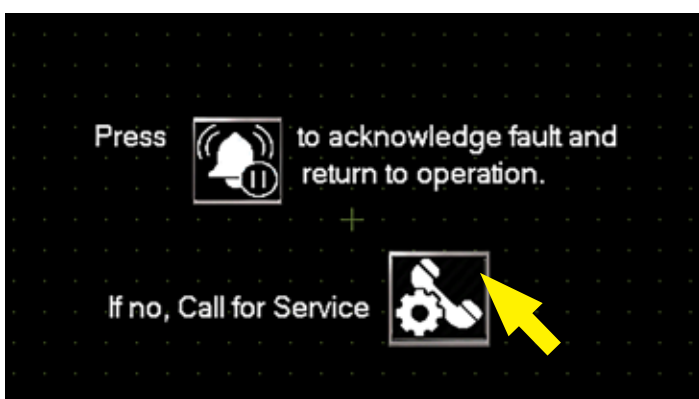
**PRESS** the **FILL VALVE TEST** button listening for a  sound indicating the valve operated.

- If the valve opens and water is running then press YES.
- If the valve does not open and water is not running then press NO.

### Extractor Faults

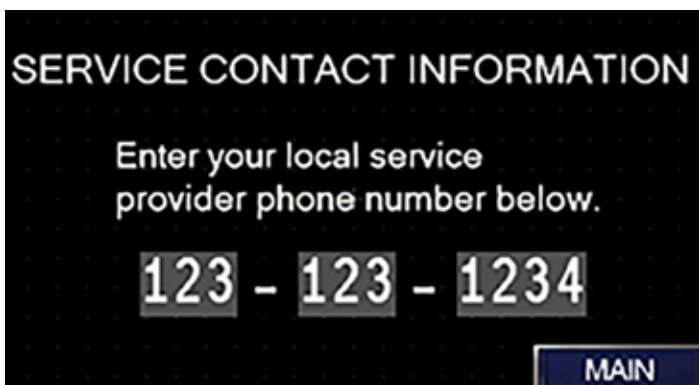


**PRESS NO, if the second 3 minute attempt fails.**



**PRESS** 

- Press the phone icon to access the service company phone number.

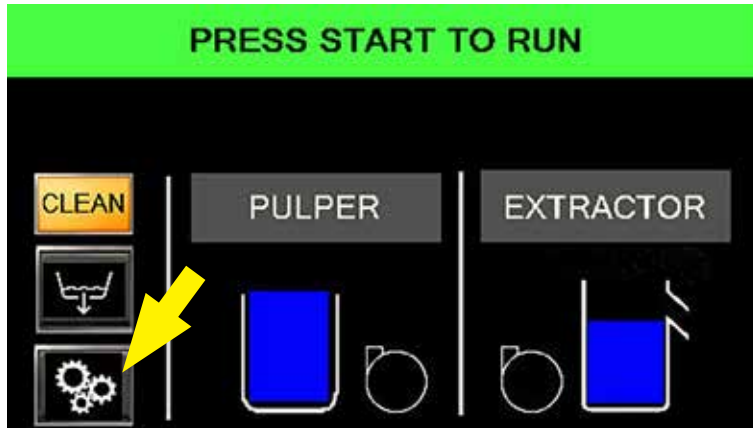


- Service company phone number.

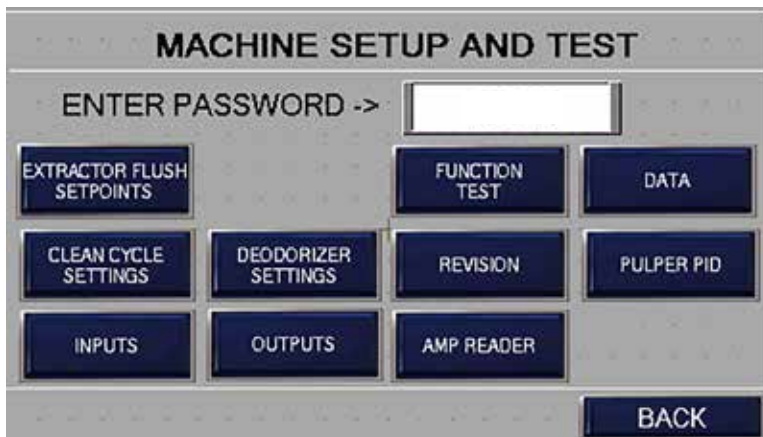
# DIAGNOSTICS

- The pulper includes a diagnostics feature to set parameters and to troubleshoot.

## Signing In



- The DIAGNOSTICS button is located in the lower left corner of the display.
- It is active whenever it is visible.
- Press the button to enter the diagnostic menu below.

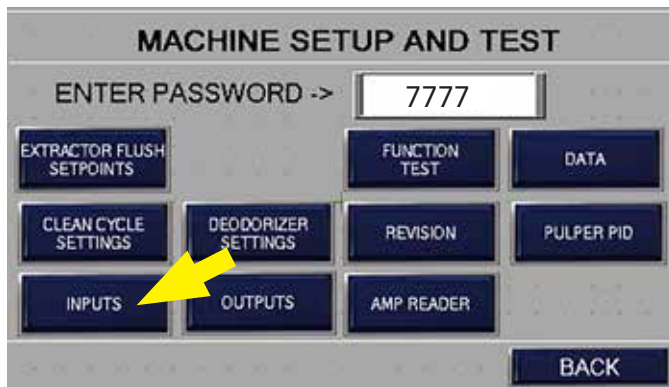


- Press the ENTER PASSWORD window.
- A keypad will pop up.

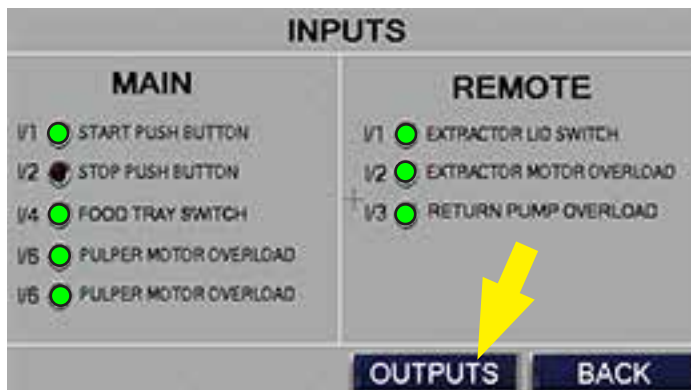


- THE 7777 password is provided for site managers. Some functionality is disabled at this password level which is a normal condition.
- Access is not granted if the menu does not appear. Press CLR to clear an entry.
- Press 7777 and ENT.
- The diagnostic menus is now active.

## Inputs Menus

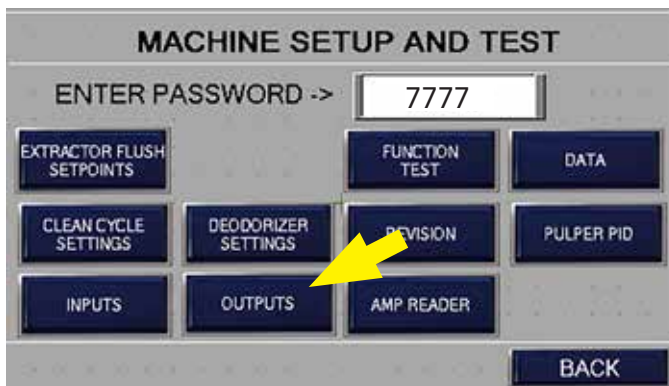


- Press INPUTS

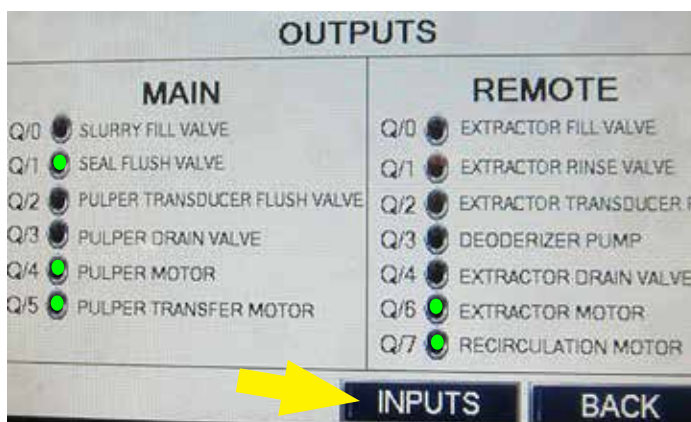


- The normal operating condition of the Pulper (MAIN), and the Extractor (REMOTE) inputs are indicated by a green light.
- A red light indicates there is a problem with an input.
- Press OUTPUTS to go to the outputs screen or BACK to return to the screen above.

## Outputs Menus



- Press OUTPUTS

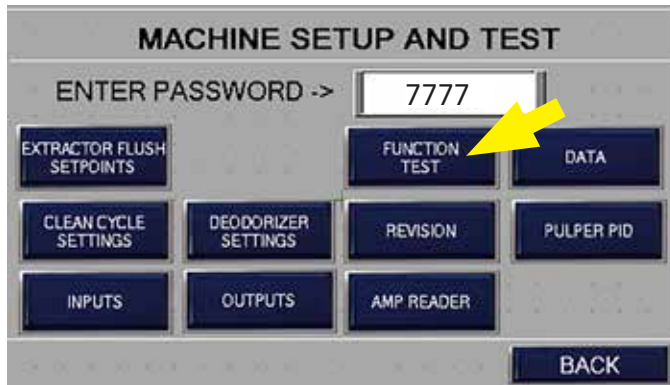


- The normal operating condition of the Pulper (MAIN), and the Extractor (REMOTE) outputs are indicated by a green light.
- A red light indicates there is a problem with an input.
- Press INPUTS to go to the inputs screen or BACK to return to the screen above.

Continued on next page.

# DIAGNOSTICS (continued)

## Function Test Menu



- Press FUNCTION TEST



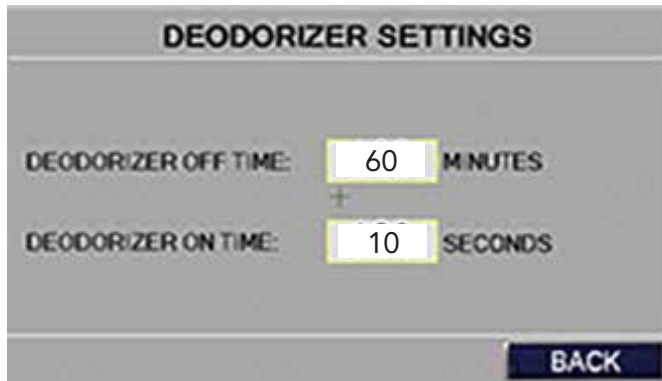
- Press and hold a component button and the component should operate.
- Release the button and the component should stop.
- Contact the service company for assistance resolving a problem.

## Clean Cycle Settings



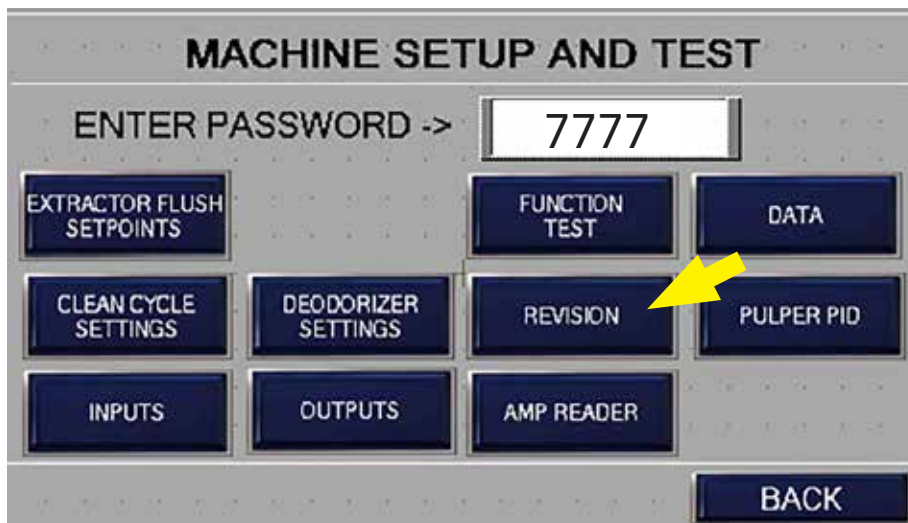
- Press CLEAN CYCLE SETTINGS
- The menu appears.
- The factory default clean alarm setting is 10 hours.
- The factory default number of clean cycles is 3.

## Deodorizer Settings

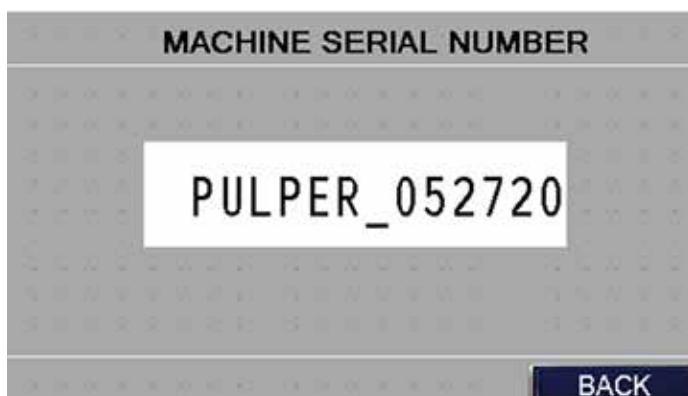


- Press CLEAN CYCLE SETTINGS
- The menu appears.
- The factory default Off time setting is 60 minutes.
- The factory default On time setting is 10 seconds.

## Revision Menu



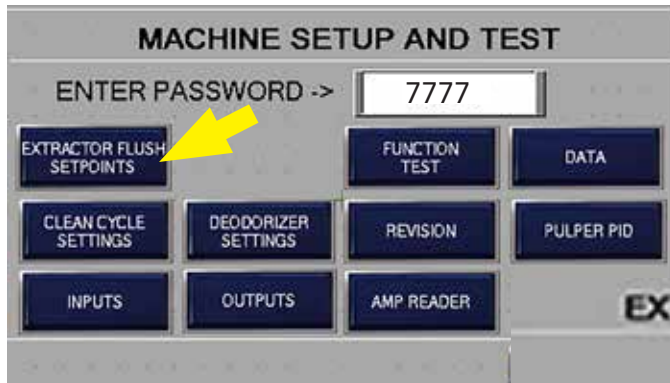
- Press REVISION



- Each Waste System has a computer program number.
- The service agent may request this number when resolving an issue by phone.

## DIAGNOSTICS (continued)

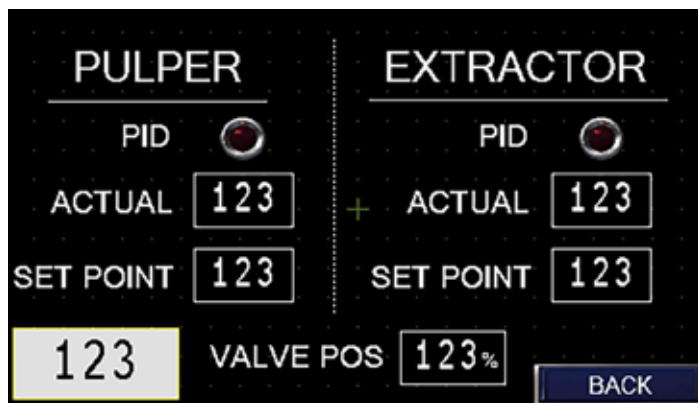
### Extractor Flush Set Points (Not accessible with password 7777).



- Sets the intervals that the extractor flushes itself during operation.

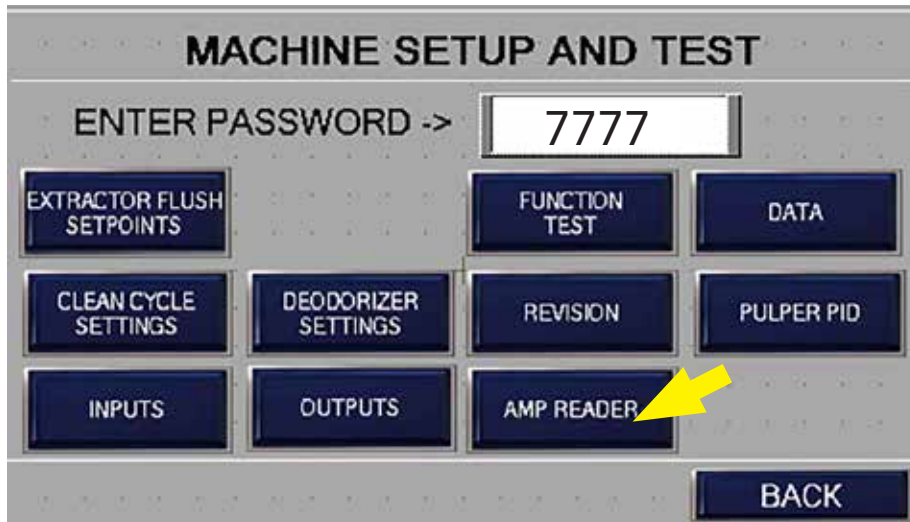


### Data Test Menu (Not accessible with password 7777).

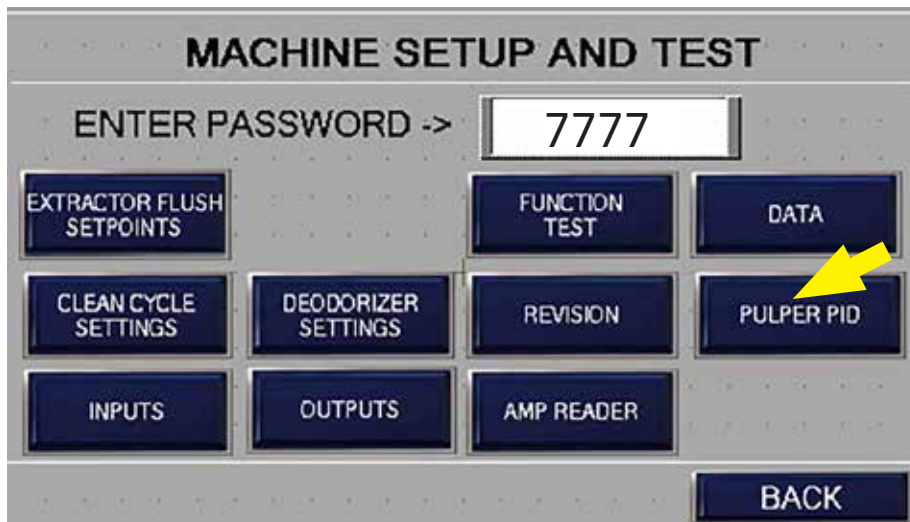


- Reports the performance of the pulper and extractor transfer system.

Amp Reader (Not accessible with password 7777).



Pulper PID (Not accessible with password 7777).



# MAINTENANCE SCHEDULES

## Daily Maintenance Checks

- Check the general cleanliness of the waste system and room.
- NOTE: Deodorizers are not a substitute for daily cleaning.

## Weekly Maintenance Checks

- If equipped, refill the deodorizer chemical container, (chemicals by others).
- Inspect water supply and drain lines for leaks.
- Make sure floor drains are not clogged.
- Check pulper and extractor safety switches for damage.  
**Replace, do not bypass a damaged safety.**
- Inspect doors and covers for proper fit.
- Inspect pulper splash curtains (if equipped).
- Inspect control cabinet doors for missing or loose hardware.
- Inspect control cabinet touchscreen displays for damage.

## Monthly Maintenance Checks

- Inspect the pulper cutter disk, cutter blades, and cutter blocks for damage.
- Inspect the extractor screen for damage.
- Inspect machine warning labels and replace if damaged.

## Yearly Maintenance Checks

- Contact an authorized service agent for inspection.

## Lubrication Schedule

Extractor gearbox (Boston Gearbox No. F726

Klübersynth UH1 6-460 or equivalent

- 36 fluid ounces
- Change at 1500 hours then every 5000 hours.
- Do not mix lubricants.

## Troubleshooting Chart

Condition	Cause	Solution
Lost power/No display	Main breaker off. Cabinet breaker off/tripped. HMI/PLC error. Control fuse blown.	Turn main power on. Reset tripped handle then turn to ON. Contact service agent.
Will not start	Extractor chute door open. Pulper cover open. Safety switch defective. Start/Stop station error. Drain open error on HMI. Motor overload tripped.	Close chute door. Reposition pulper cover. Call service agent. Push green start button. Press Drain Icon on HMI/Call service agent Call service agent.
No fill water to pulper/Extractor	Water supply off. Green start button to fill not pressed. Drain valve open. Drain valve defective. Pressure transducer defective.	Turn valve on. Push button on. Close drain valve Icon on HMI. Call service agent. Call service agent.
Pulper water level low.	Water supply off. Drain valve open. Drain valve defective. Pressure transducer defective. Water fill valve defective. Transfer pump problem/cavitating Transfer valve defective.	Turn valve on. Close drain valve Icon on HMI. Call service agent. Call service agent. Call service agent. Turn system off then back on. Call service agent. Call service agent.
Pulper/Extractor fill constantly	Defective fill valve. Defective pressure transducer.	Call service agent. Call service agent.
Banging noise from pulper.	Metal object in tank. Cutter bars/blocks loose or broken.	Disconnect all power and remove object. Call service agent.
Discharge pulp wet.	Extractor screen clogged. Compression cone needs adjustment. Auger brush worn.	Clean screen. Call service agent. Call service agent.

**This Page  
intentionally  
Left Blank**